

Dial Thermometer (Bimetal 100mm)



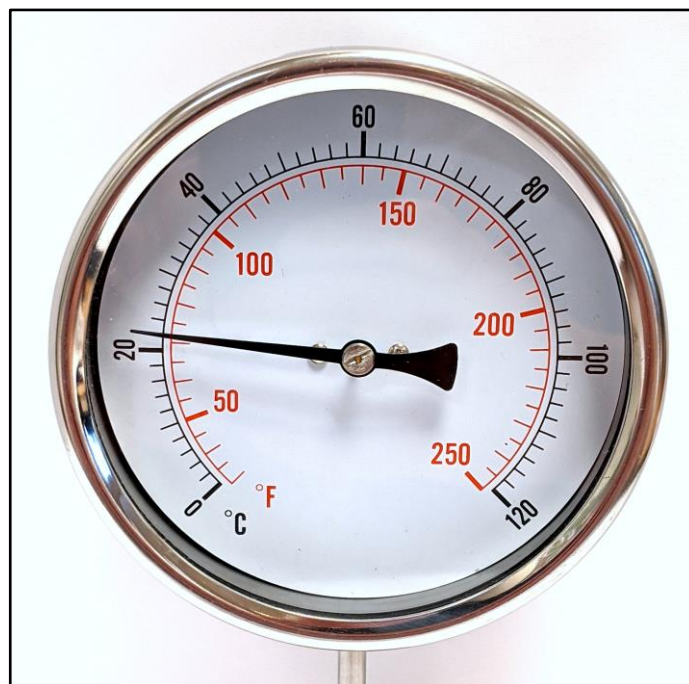
Description

A range of direct mount stainless steel bimetal dial thermometers for temperature measurement in industrial or laboratory applications.

This economical range of bimetal dial thermometers provides a reliable and accurate method of temperature measurement, featuring ranges of -30 to +60 °C or 0 to 120 °C, a 100mm stainless steel dial and a bottom or centre back mounting 6mm diameter stem.

These simple to operate temperature gauges are actuated by a bi-metal strip element, which expands with the change in temperature and this movement in turn moves a pointer on the calibrated dial, scaled in both Degree C and F.

The temperature gauge can be mounted in vessels or pipes in many industrial applications and are available with optional compression fittings and thermowells.



Specification

Product	Bimetal Dial Thermometer
Temp Ranges	-30/+60 °C or 0/100 °C
Accuracy	Class 2 (BS EN13190)
Stem Length	50 or 100mm
Stem Diameter	6.0mm
Stem Position	bottom or centre back entry
Scale	°C outer black, °F inner Red
Material	Stainless Steel
Dial Size	100mm (4")
Part Number	IGBIM

Features

- Accuracy Class 2.0 (BS EN13190)
- Stainless Steel Case (IP52)
- Bottom or Centre Back Entry
- Dual Temperature Scale C or F

Application

- General Industrial or Laboratory
- Processing Industries
- Food, Beverage & Dairy
- HVAC

For more information visit:

sterlingsensors.co.uk