

# Standard Duplex Thermocouple Connectors



## Description

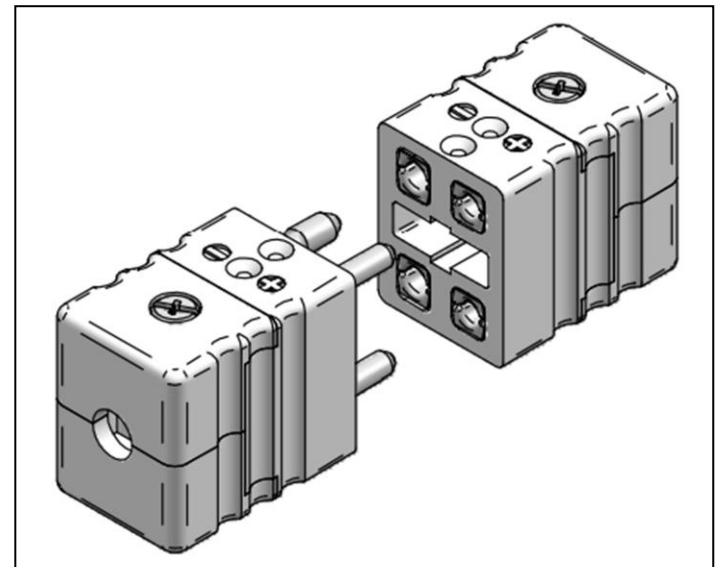
Standard duplex thermocouple connectors for termination of flexible, stranded or solid wires and mineral insulated thermocouple cables.

## Features

- Glass filled thermoplastic construction
- Available with solid or hollow pins in original thermocouple material with spring loaded inserts
- Sandwich construction connects and secures wires
- Polarised pins to reduce connection uncertainties
- Short circuit prevention

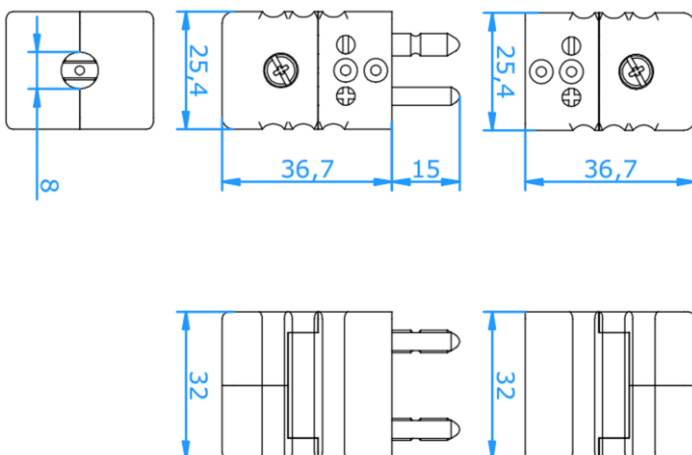
## Application

- Accepts wires up to 2.0mm with a maximum cable diameter of 8.0mm
- Temperature rating 200°C Max.
- Available for use with thermocouple type K



## Specification

Product	Standard Duplex Thermocouple Connectors
Type	Type K
Max. Temp	200°C
Wire $\varnothing$	Up to 2.0mm
Cable $\varnothing$	Up to 8.0mm
Pins	Original Thermocouple Material Available with solid or hollow pins



## Help & Advice

Our friendly sales team are here to help, offering expert advice



For more information visit:

[sterlingsensors.co.uk](http://sterlingsensors.co.uk)



**Sterling Sensors UK Ltd**

Fitmec Works :: Hawksley Street :: Oldham

United Kingdom :: OL8 4PQ

T: +44 (0) 161 620 0410 F: +44 (0) 161 627 0507 E: [sales@sterlingsensors.co.uk](mailto:sales@sterlingsensors.co.uk) W: [sterlingsensors.co.uk](http://sterlingsensors.co.uk)